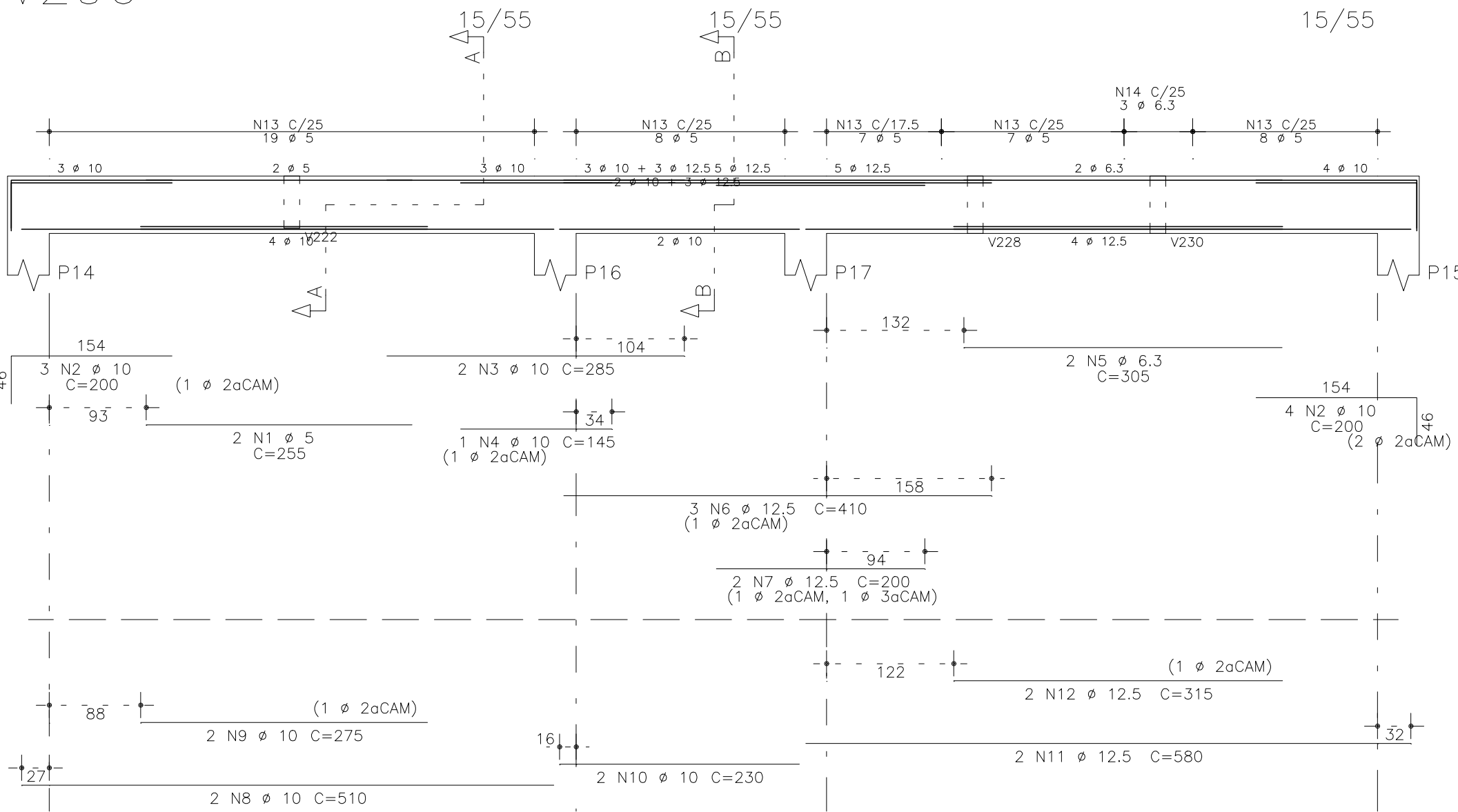
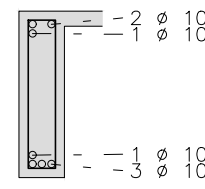


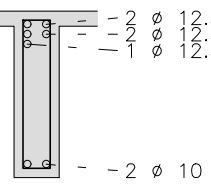
V206



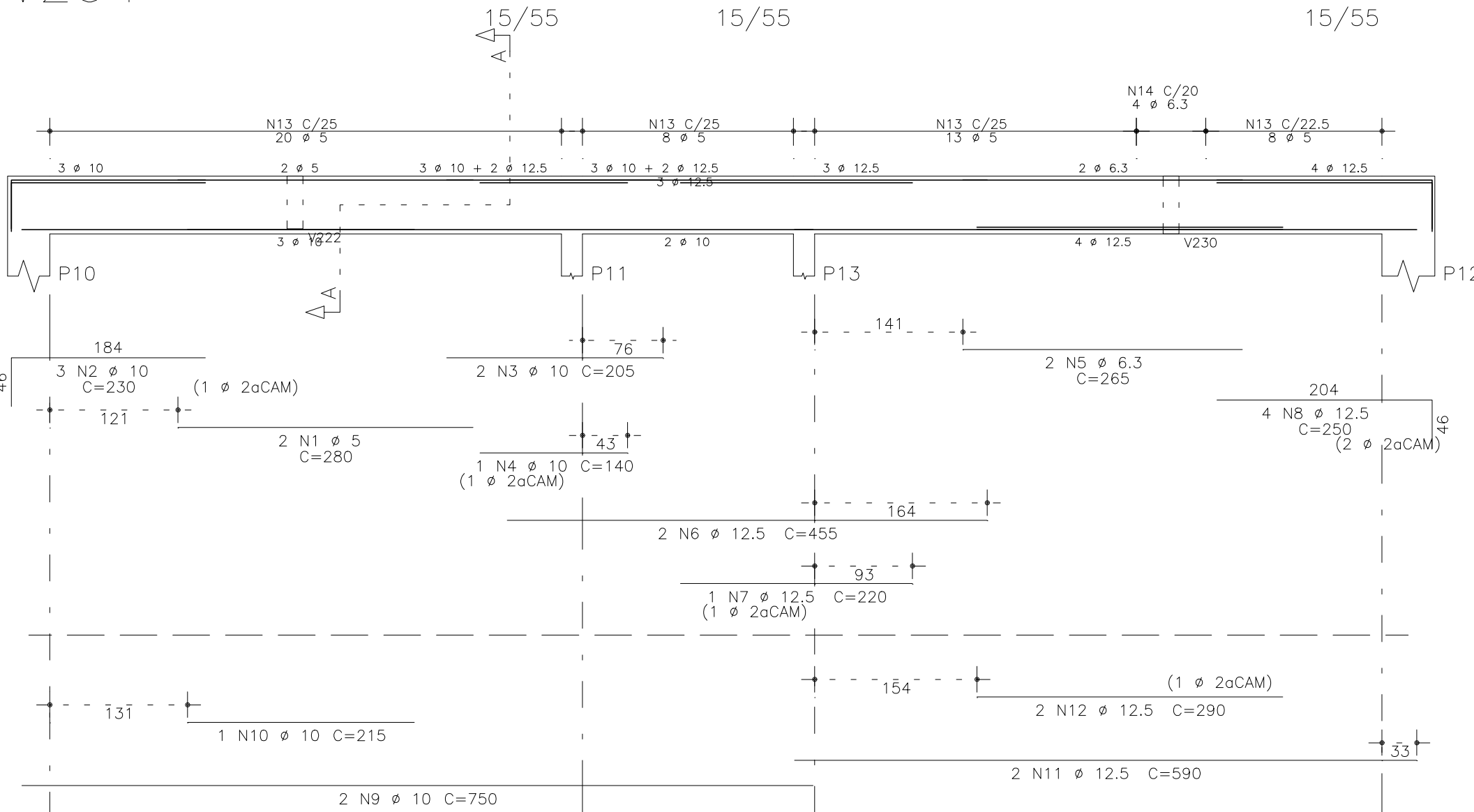
Corte A



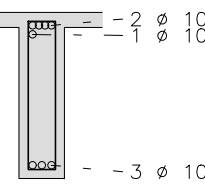
Corte B



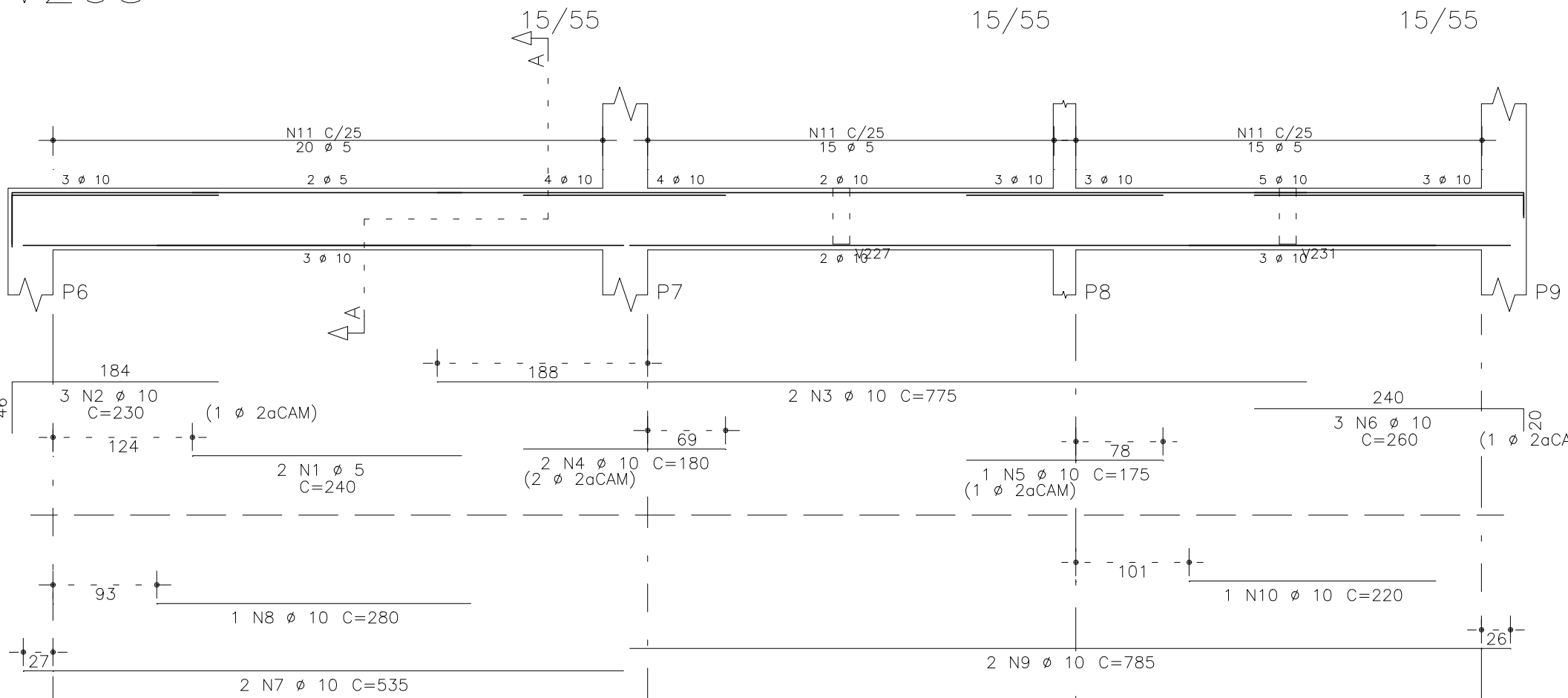
V204



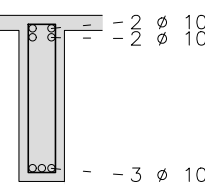
Corte A



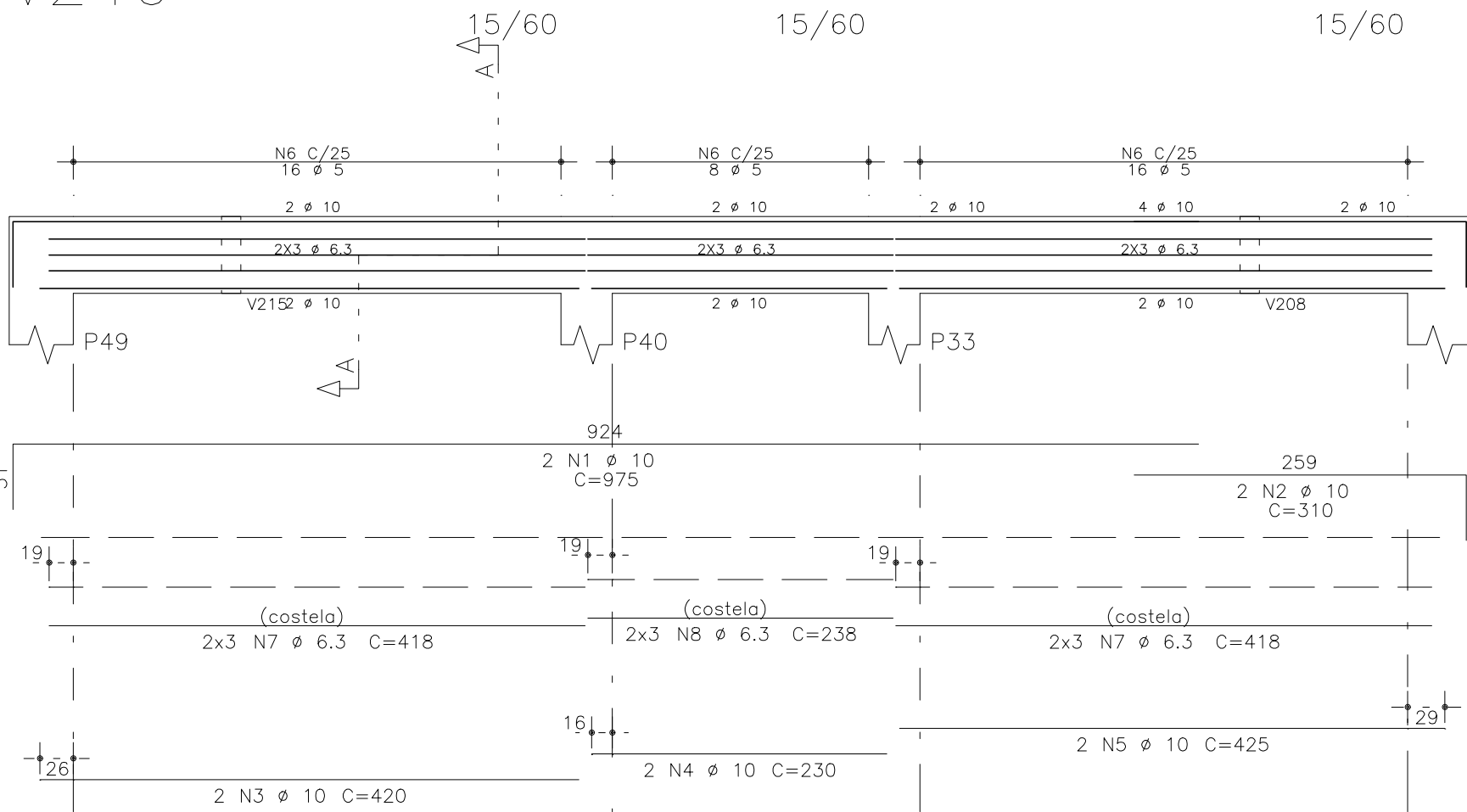
V203



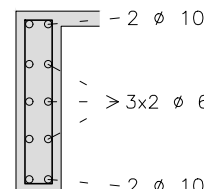
Corte A



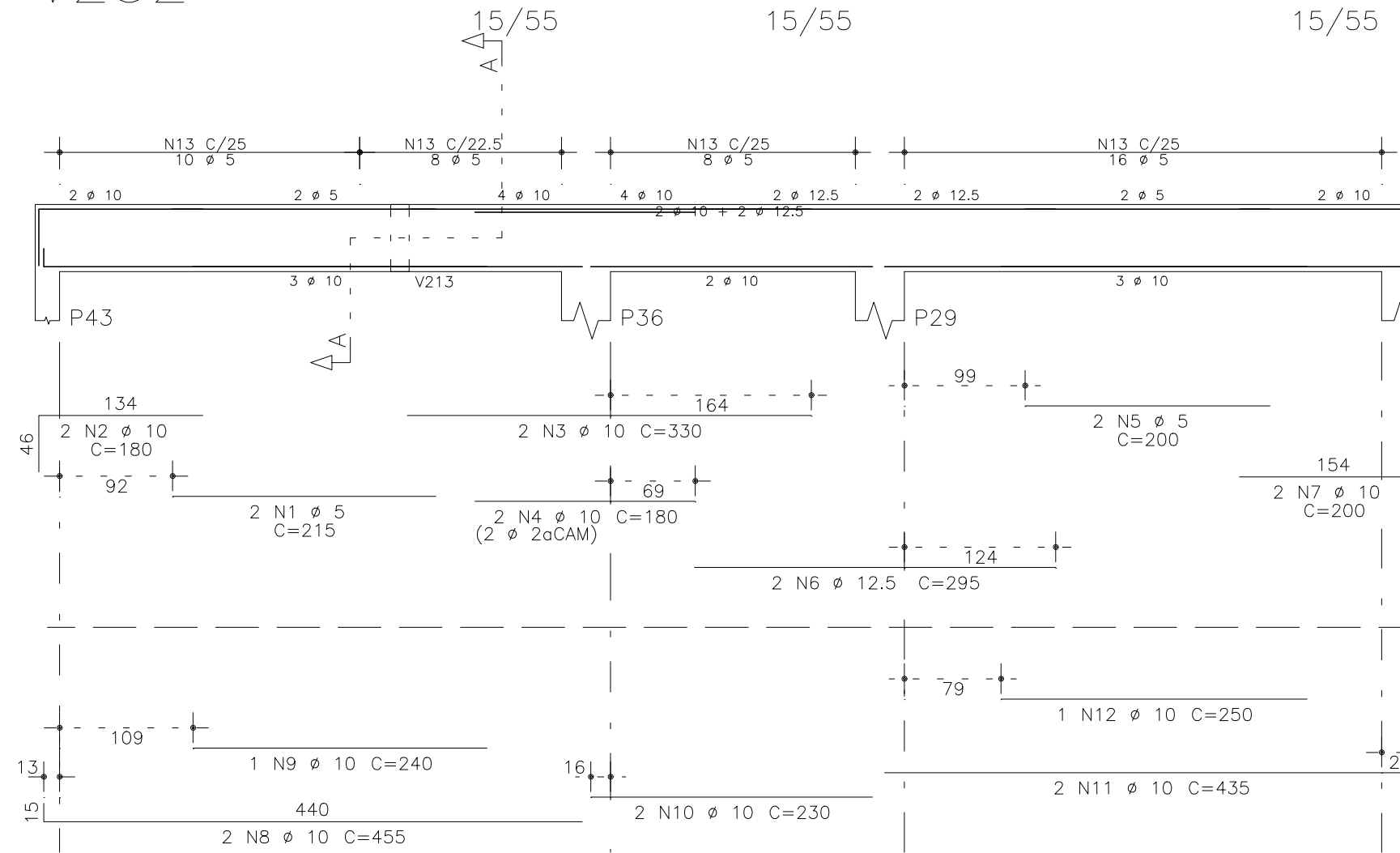
V246



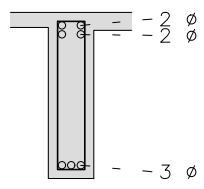
Corte A



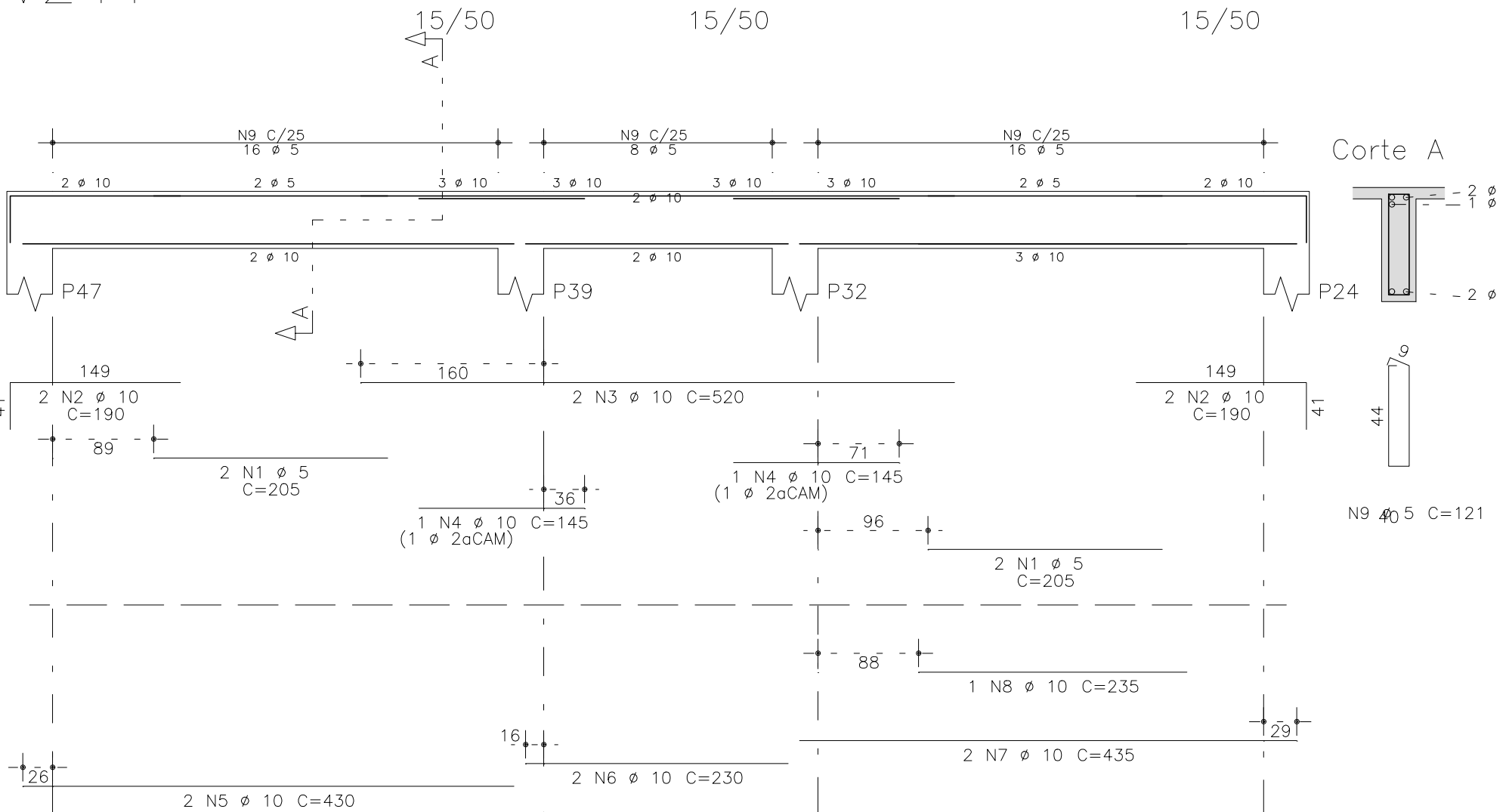
V232



Corte A



V241



Corte A



	AÇO	POS	BIT (mm)	QUANT	COMPRIMENTO	
					UNIT (cm)	TOTAL (cm)
V203	60B	1	5	2	240	480
	50A	2	10	3	230	690
	50A	3	10	2	775	1550
	50A	4	10	2	180	360
	50A	5	10	1	175	175
	50A	6	10	3	260	780
	50A	7	10	2	535	1070
	50A	8	10	1	280	280
	50A	9	10	2	785	1570
	50A	10	10	1	220	220
60B	11	5	50	131	6550	
V204	60B	1	5	2	280	560
	50A	2	10	3	230	690
	50A	3	10	2	205	410
	50A	4	10	1	140	140
	50A	5	6.3	2	265	530
	50A	6	12.5	2	455	910
	50A	7	12.5	1	220	220
	50A	8	12.5	4	250	1000
	50A	9	10	2	750	1500
	50A	10	10	1	215	215
	50A	11	12.5	2	590	1180
	50A	12	12.5	2	290	580
	60B	13	5	49	131	6419
	50A	14	6.3	4	132	528
V206	60B	1	5	2	255	510
	50A	2	10	7	200	1400
	50A	3	10	2	285	570
	50A	4	10	1	145	145
	50A	5	6.3	2	305	610
	50A	6	12.5	3	410	1230
	50A	7	12.5	2	200	400
	50A	8	10	2	510	1020
	50A	9	10	2	275	550
	50A	10	10	2	230	460
	50A	11	12.5	2	580	1160
	50A	12	12.5	2	315	630
	60B	13	5	49	131	6419
	50A	14	6.3	3	132	396
V232	60B	1	5	2	215	430
	50A	2	10	2	180	360
	50A	3	10	2	330	660
	50A	4	10	2	180	360
	60B	5	5	2	200	400
	50A	6	12.5	2	295	590
	50A	7	10	2	200	400
	50A	8	10	2	455	910
	50A	9	10	1	240	240
	50A	10	10	2	230	460
	50A	11	10	2	435	870
	50A	12	10	1	250	250
	60B	13	5	42	131	5502
	V241	60B	1	5	4	205
50A		2	10	4	190	760
50A		3	10	2	520	1040
50A		4	10	2	145	290
50A		5	10	2	430	860
50A		6	10	2	230	460
50A		7	10	2	435	870
50A		8	10	1	235	235
60B		9	5	40	121	4840
V246	50A	1	10	2	975	1950
	50A	2	10	2	310	620
	50A	3	10	2	420	840
	50A	4	10	2	230	460
	50A	5	10	2	425	850
	60B	6	5	40	141	5640
	50A	7	6.3	12	418	5016
	50A	8	6.3	6	238	1428

RESUMO AÇO CA 50-60			
AÇO	BIT (mm)	COMPR (m)	PESO (kg)
60B	5	386	59
50A	6.3	85	21
50A	10	275	170
50A	12.5	79	76
Peso Total 60B =			59 kg
Peso Total 50A =			267 kg

O acesso ao Modelo Estrutural em dimensão pode ser executado pelo QR CODE ao lado, podendo acessar via celulares, tablets e quaisquer outros dispositivos.

Schuring & Schuring Ltda.

Escritório Técnico B.E.SCHURING – Projetos de Engenharia  
Av. XV de Novembro, 489 – Porto 2o. Andar – Cuiabá MT  
Fone:(065) 321 9959 – Fax:(065) 623 5066 – Email – schuring@terra.com.br

PROJETO:

PROPRIETÁRIO:

PREFEITURA MUNICIPAL  
VARZEA GRANDE MT

RESP. TEC. EXECUÇÃO:

AUTORES DO PROJETO:

Benedito Eliseu Schuring  
Eng. Civil CREA 715/D-MT  
André Luiz Schuring  
Eng. Civil CREA 8697/D-MT

OBRA:

PREFEITURA MUNICIPAL DE  
VARZEA GRANDE MT

Unid. Básica de Saúde  
UBS-MATILDE CURVO DE MORAES

END.: Av. dos Bandeirantes.  
Conj. Habit. José Carlos Guimarães, Várzea Grande-MT

ASSUNTO:

COBERTURA  
DET ARM VIGA

PECAS DETALHADAS

V203 / V204 / V206 / V232 / V241 / V246

FOI:

DIREITOS AUTORES RESERVADOS  
VERIFICAR MEDIDAS NA OBRA

DATA:

15/07/2019

FOLHA No.

21